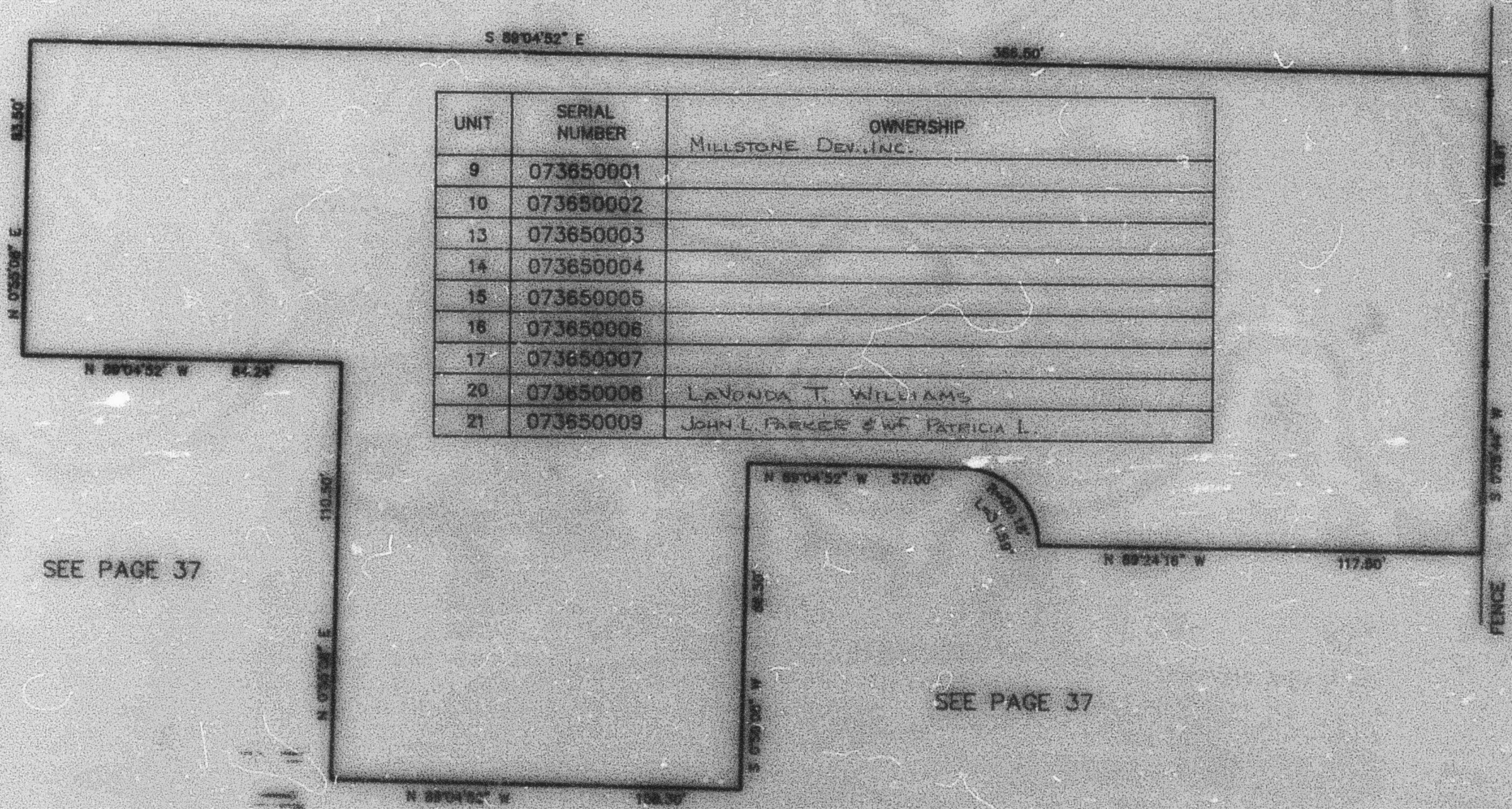


PART OF THE SW 1/4, SEC. 16, T.5N., R.1W., S.L.B. & M.
SOUTH POINTE - PHASE 3
 A CONDOMINIUM PROJECT
 IN WASHINGTON TERRACE CITY
 SCALE 1" = 30'

369

TAXING UNIT: 255

SEE PAGE 37



UNIT	SERIAL NUMBER	OWNERSHIP
9	073650001	MILLSTONE DEV., INC.
10	073650002	
13	073650003	
14	073650004	
15	073650005	
16	073650006	
17	073650007	
20	073650008	LAVONDA T. WILLIAMS
21	073650009	JOHN L. PARKER & WIFE PATRICIA L.

SEE PAGE 37

FOR COMPLETE END DATA SEE ORIGINAL INDICATION PLAT IN BOOK 31, PAGE 78 OF RECORDS.